



The Global Language of Business

# Despatch Advice Line Item Extension eBmeat Business Message Standard (BMS)

*Release 3.4.1, Draft, Nov 2019*



## Document Summary

Document Item	Current Value
Document Name	Despatch Advice Line Item Extension eBmeat Business Message Standard (BMS)
Document Date	Nov 2019
Document Version	3.4.1
Document Issue	1
Document Status	Draft

## Work Request Reference

Date of WR Submission to GSMP:	WR Submitter(s):	Refer to Change Request (WR) Number(s):
10-Sep-2004	GS1 France GS1 Germany	04-000177 (02-000195)
25-Jun-2014	GS1 Global Office	WR 14-110
03-Oct-2018	GS1 GO	18-000319

## Business Requirements Document (BRAD) Reference

BRAD Title	BRAD Issue Date	BRAD Version
BRD Exchange Traceability and Processing History Data of Beef Products (Slaughter to Retail)	14 Mar 2005	2.5.1

## Document Change History

Date of Change	Version	Changed By	Reason for Change	Summary of Change
12-Jan-2012	BMS 3.0 – Issue 1	Mark Van Eeghem	BMS Release 3.0	See summary of changes
01-May-2013	BMS 3.1 – Issue 1	Coen Janssen	BMS Release 3.1	See summary of changes
15-Sep-2014	BMS 3.2 – Issue 1	Ewa Iwicka	BMS Release 3.2	See summary of changes
01-Mar-2017	BMS 3.3 – Issue 1	Ewa Iwicka	BMS Release 3.3	See summary of changes
15-Oct-2018	BMS 3.4 – Draft for community review	Ewa Iwicka	BMS Release 3.4	See summary of changes
08-Nov-2019	BMS 3.4.1 – Issue 1	Radhika Chauhan	BMS Release 3.4.1	See summary of changes



## Disclaimer

GS1®, under its IP Policy, seeks to avoid uncertainty regarding intellectual property claims by requiring the participants in the Work Group that developed this **Despatch Advice Line Item Extension eBmeat Business Message Standard (BMS)** to agree to grant to GS1 members a royalty-free licence or a RAND licence to Necessary Claims, as that term is defined in the GS1 IP Policy. Furthermore, attention is drawn to the possibility that an implementation of one or more features of this Specification may be the subject of a patent or other intellectual property right that does not involve a Necessary Claim. Any such patent or other intellectual property right is not subject to the licencing obligations of GS1. Moreover, the agreement to grant licences provided under the GS1 IP Policy does not include IP rights and any claims of third parties who were not participants in the Work Group.

Accordingly, GS1 recommends that any organization developing an implementation designed to be in conformance with this Specification should determine whether there are any patents that may encompass a specific implementation that the organisation is developing in compliance with the Specification and whether a licence under a patent or other intellectual property right is needed. Such a determination of a need for licencing should be made in view of the details of the specific system designed by the organisation in consultation with their own patent counsel.

THIS DOCUMENT IS PROVIDED "AS IS" WITH NO WARRANTIES WHATSOEVER, INCLUDING ANY WARRANTY OF MERCHANTABILITY, NONINFRINGEMENT, FITNESS FOR PARTICULAR PURPOSE, OR ANY WARRANTY OTHERWISE ARISING OUT OF THIS SPECIFICATION. GS1 disclaims all liability for any damages arising from use or misuse of this Standard, whether special, indirect, consequential, or compensatory damages, and including liability for infringement of any intellectual property rights, relating to use of information in or reliance upon this document.

GS1 retains the right to make changes to this document at any time, without notice. GS1 makes no warranty for the use of this document and assumes no responsibility for any errors which may appear in the document, nor does it make a commitment to update the information contained herein.

GS1 and the GS1 logo are registered trademarks of GS1 AISBL.

# Table of Contents

<b>1</b>	<b>Business Domain View</b> .....	<b>5</b>
1.1	Introduction .....	5
1.2	References .....	5
<b>2</b>	<b>Business Context</b> .....	<b>6</b>
<b>3</b>	<b>Business Transaction View</b> .....	<b>6</b>
3.1	Business Transaction – Exchange Beef Traceability Data .....	6
<b>4</b>	<b>Business Information View</b> .....	<b>9</b>
4.1	Meat Despatch Advice Line Item Extension .....	9
4.2	Meat Work Item Identification.....	11
4.3	Animal Identification.....	13
4.4	Processing Activity Details.....	14
4.5	Data Types.....	17
4.6	Enumerations (message specific) .....	19
4.7	Code Lists .....	19
<b>5</b>	<b>Business Message Examples</b> .....	<b>19</b>
5.1	Example 1.....	19
5.2	Example 2.....	34
<b>6</b>	<b>Implementation Considerations</b> .....	<b>47</b>
6.1	User Guide .....	47
6.2	Message Specific Considerations .....	47
<b>7</b>	<b>Summary of Changes</b> .....	<b>48</b>
7.1	BMS Release 3.0 .....	48
7.2	BMS Release 3.1 .....	48
7.3	BMS Release 3.2 .....	49
7.4	BMS Release 3.3 .....	49
7.5	BMS Release 3.4 .....	49
7.6	BMS Release 3.4.1 .....	50
<b>8</b>	<b>Appendices</b> .....	<b>50</b>
<b>9</b>	<b>Acknowledgements</b> .....	<b>50</b>
9.1.1	Work Group .....	50
9.1.2	Development Team Members .....	51

# 1 Business Domain View

## 1.1 Introduction

### Message Definition

Meat Product Extension is an extension to the Despatch Advice Document used to enable tracking & tracing (traceability) of meat products, by exchange of production history data.

### Principles

This extension can be used only with Despatch Advice message; it is applied at the DespatchLineItem level.

## 1.2 References

Reference Number	Reference Name
[Ref1]	BRD Exchange Traceability and Processing History Data of Beef Products (Slaughter to Retail)
[Ref2]	BRAD Upstream Standards – Despatch, Receipt & Consumption 0.1.1
[Ref3]	BRD Despatch Advice 1.0.9.3
[Ref4]	EANCOM®-1997 (UN/EDIFACT D.96A)
[Ref5]	EANCOM®-2002 (UN/EDIFACT D.01B)
[Ref6]	Simpl-eb Principles EAN.UCC Business Message Standards July 2001 (Simpl-eb and FMCG extension)
[Ref7]	EbXML Core Components technical specification Version 1.8
[Ref8]	EbXML Core Component Catalogue Feb 2002
[Ref9]	UMM R8D and UMM N90 R10 (UN/CEFACT)
[Ref10]	eCom Domain Common Library 3.4
[Ref11]	Shared Common Library 3.4
[Ref12]	GS1 General Specifications
[Ref13]	GS1 Traceability Implementation ("TRACE-I")
[Ref14]	GCI-Glossary
[Ref15]	Project proposal eBmeat
[Ref16]	Traceability of beef (GS1)
[Ref17]	Stage3OnFarmProject (Australia)
[Ref18]	EANEDI Model 5A (Australia)
[Ref19]	EMEG-EDI Data Dictionary
[Ref20]	UN/ECE standard for bovine carcass and cuts
[Ref21]	UMM R8D and UMM N90 R10 (UN/CEFACT)
[Ref22]	PRODAT / Übermittlung von Stammdaten/Qualitätsdaten zur Rindfleischherkunft mit EANCOM® (Germany)
[Ref23]	DESADV Profil Boucherie (France)

## 2 Business Context

Context Category	Value(s)
Industry	All
Geopolitical	All
Product	All
Process	Deliver
System Capabilities	GS1 System
Official Constraints	None

## 3 Business Transaction View

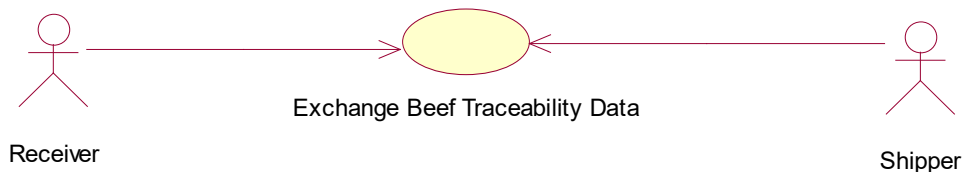
The extension for the “**Exchange Traceability and Processing History Data of Beef Products (Slaughter to Retail)**” details the data needed to be used in conjunction with the Despatch Advice message.

The team was chartered to define the business requirements and this has been achieved by providing data definitions and UML-model for the exchange of traceability and processing history data of unprepared beef products (slaughter to retail).

Note that this model can be used as a basis for other tasks regarding traceability and/or processing history of products.

### 3.1 Business Transaction – Exchange Beef Traceability Data

#### Use Case Diagram

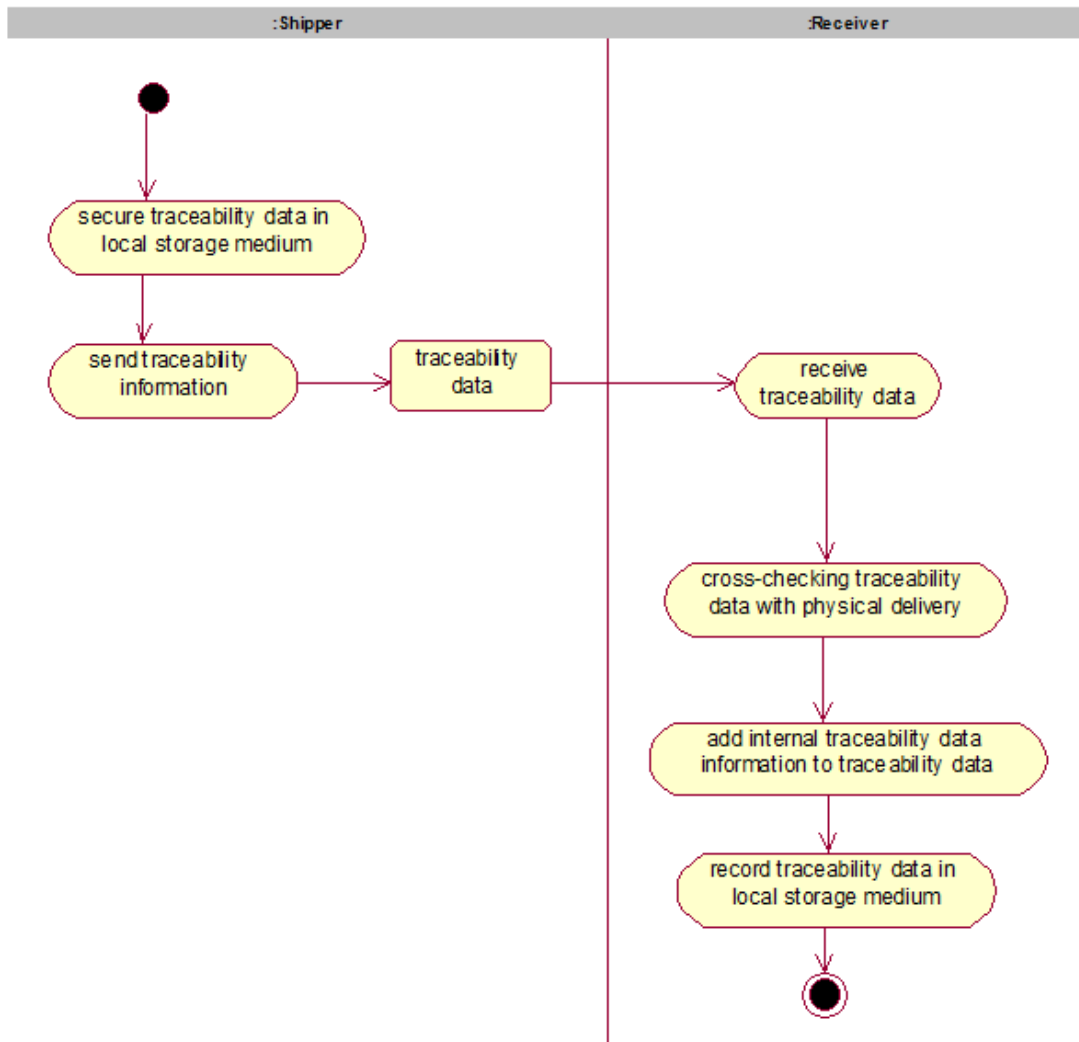


#### Use Case Description

Use Case ID	UC-1
Use Case Name	Exchange Beef Traceability Data
Use Case Description	Exchange beef history data and beef product despatch information in order to support traceability and quality management.
Actors (Goal)	Shipper (Slaughterhouse; Post-Slaughter Processor, Wholesaler) Receiver (Post-Slaughter Processor, Wholesaler, Retailer)
Performance Goals	None
Preconditions	A trading agreement (including alignment of master data, payment and delivery terms) has been established between Seller and Buyer. A valid order from the Buyer has been received and accepted. Traceability data for product(s) ordered have been compiled and prepared for exchange by the Shipper. The beef products are uniquely identified.

Post conditions	Receiver has been supplied with traceability data for beef product(s) which he is to receive. Place, time and conditions for delivery have been communicated.															
Scenario	<p>Begins when the Shipper secures in his local storage medium the traceability data of beef product(s).</p> <p>Continues with:</p> <table border="1" style="width: 100%; border-collapse: collapse;"> <thead> <tr style="background-color: #d3d3d3;"> <th style="width: 10%;">Step #</th> <th style="width: 20%;">Actor</th> <th style="width: 70%;">Activity Step</th> </tr> </thead> <tbody> <tr> <td></td> <td>Shipper</td> <td>Shipper sends the Receiver traceability data of beef products to be delivered.</td> </tr> <tr> <td></td> <td>Receiver</td> <td>Receiver receives this traceability data.</td> </tr> <tr> <td></td> <td>Receiver</td> <td>Receiver cross-checks traceability data with physical delivery.</td> </tr> <tr> <td></td> <td>Receiver</td> <td>Receiver adds internal information to traceability data, where applicable.</td> </tr> </tbody> </table> <p>Ends when the Receiver secures the traceability data in his local storage medium.</p>	Step #	Actor	Activity Step		Shipper	Shipper sends the Receiver traceability data of beef products to be delivered.		Receiver	Receiver receives this traceability data.		Receiver	Receiver cross-checks traceability data with physical delivery.		Receiver	Receiver adds internal information to traceability data, where applicable.
Step #	Actor	Activity Step														
	Shipper	Shipper sends the Receiver traceability data of beef products to be delivered.														
	Receiver	Receiver receives this traceability data.														
	Receiver	Receiver cross-checks traceability data with physical delivery.														
	Receiver	Receiver adds internal information to traceability data, where applicable.														
Alternative Scenario	A discrepancy exists between traceability data and the physical delivery. <i>(Must be addressed in a separate project.)</i>															
<b>Business Transaction Rules</b>	None															

**Activity Diagram(s)**



**Figure 3-1 – Use Case Diagram: Business Transaction**

**Sequence Diagram(s)**

Not Applicable

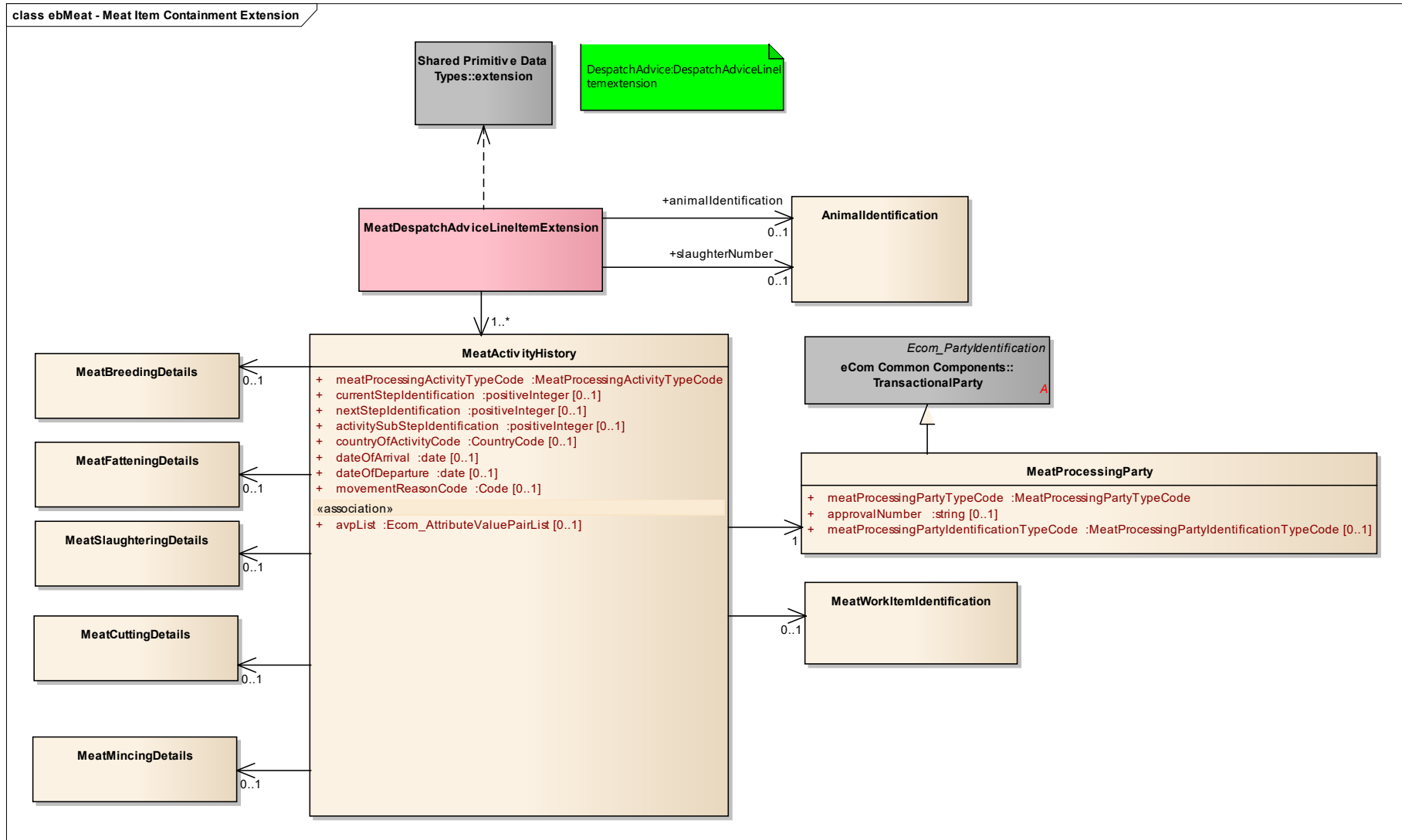




## **4 Business Information View**

### **4.1 Meat Despatch Advice Line Item Extension**

**Class diagram**



GDD report

The content of the MeatDespatchAdviceLineItemExtension class, its structure and component definitions can be accessed in the Global Data Dictionary:

[http://apps.gs1.org/GDD/bms/Version3\\_4/Pages/bieDetails.aspx?semanticURN=urn:gs1:gdd:bie:MeatDespatchAdviceLineItemExtension](http://apps.gs1.org/GDD/bms/Version3_4/Pages/bieDetails.aspx?semanticURN=urn:gs1:gdd:bie:MeatDespatchAdviceLineItemExtension)

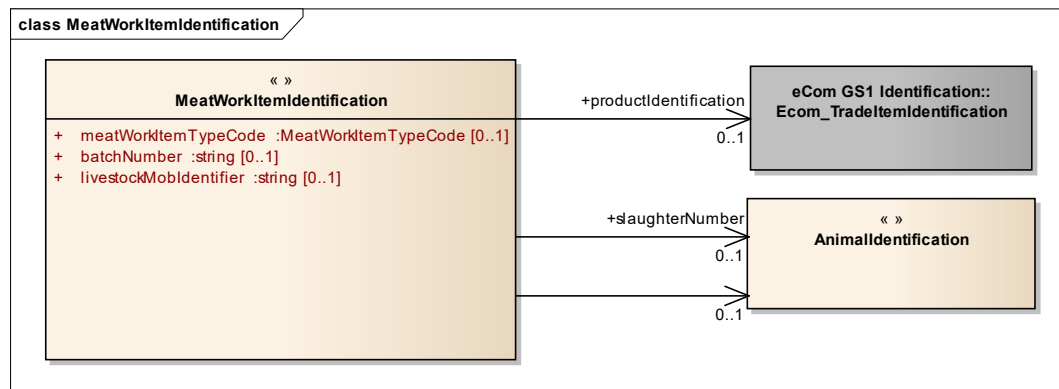
Content	Attribute / Role	Datatype /Secondary class	Multiplicity	Definition	Requirements
MeatDespatchAdviceLineItemExtension				An extension to the Despatch Advice Document used to enable tracking & tracing (traceability) of beef products.	
Association	animalIdentification	AnimalIdentification	0..1	Unique number given by a competent national authority to identify an animal individually.	
Dependency		extension			
Association		MeatActivityHistory	1..*	Details on the meat processing activities that were carried out	
Association	slaughterNumber	AnimalIdentification	0..1	Unique number given by a slaughterhouse to an animal.	



**Note:** Reference Shared Common Library Business Message (BMS) Release 3.4 and eCom Domain Common Library Business Message (BMS) Release 3.4 for all common information.

## 4.2 Meat Work Item Identification

### Class Diagram



## GDD Report

The content of the MeatWorkItemIdentification class, its structure and component definitions can be accessed in the Global Data Dictionary: [http://apps.gs1.org/GDD/bms/Version3\\_4/Pages/bieDetails.aspx?semanticURN=urn:gs1:gdd:bie:MeatWorkItemIdentification](http://apps.gs1.org/GDD/bms/Version3_4/Pages/bieDetails.aspx?semanticURN=urn:gs1:gdd:bie:MeatWorkItemIdentification)

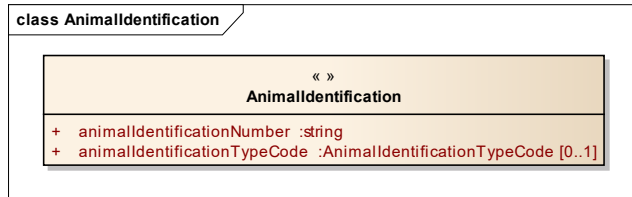
Content	Attribute / Role	Datatype /Secondary class	Multiplicity	Definition	Requirements
MeatWorkItemIdentification					renamed from WorkItemIdentification
Association		AnimalIdentification	0..1	Unique number given by a competent national authority to identify an animal individually.	
Association	slaughterNumber	AnimalIdentification	0..1	Unique number given by a slaughterhouse to an animal.	
Association	productIdentification	Ecom_TradeItemIdentification	0..1	Product identification of the meat work item.	WR 15-000314
Attribute	meatWorkItemTypeCode	MeatWorkItemTypeCode	0..1	Code specifying the type of meat work item.	
Attribute	batchNumber	string	0..1	A number that identifies a quantity of a product produced under similar conditions i.e. at one location, at one time and according to specific business rules.	
Attribute	livestockMobIdentifier	string	0..1	A collection of like breeds of livestock animals. Usually the livestock is moveable as a group.	



**Note:** Reference Shared Common Library Business Message (BMS) Release 3.4 and eCom Domain Common Library Business Message (BMS) Release 3.4 for all common information.

## 4.3 Animal Identification

### Class Diagram



### GDD Report

The content of the AnimalIdentification class, its structure and component definitions can be accessed in the Global Data Dictionary: [http://apps.gs1.org/GDD/bms/Version3\\_4/Pages/bieDetails.aspx?semanticURN=urn:gs1:gdd:bie:AnimalIdentification](http://apps.gs1.org/GDD/bms/Version3_4/Pages/bieDetails.aspx?semanticURN=urn:gs1:gdd:bie:AnimalIdentification)

Content	Attribute / Role	Datatype /Secondary class	Multiplicity	Definition	Requirements
AnimalIdentification				Unique number given by a competent national authority to identify an animal individually.	
Attribute	animalIdentificationNumber	string	1..1	Identification Number for a given animal.	
Attribute	animalIdentificationTypeCode	AnimalIdentificationTypeCode	0..1	Nature of the Identification Number.	

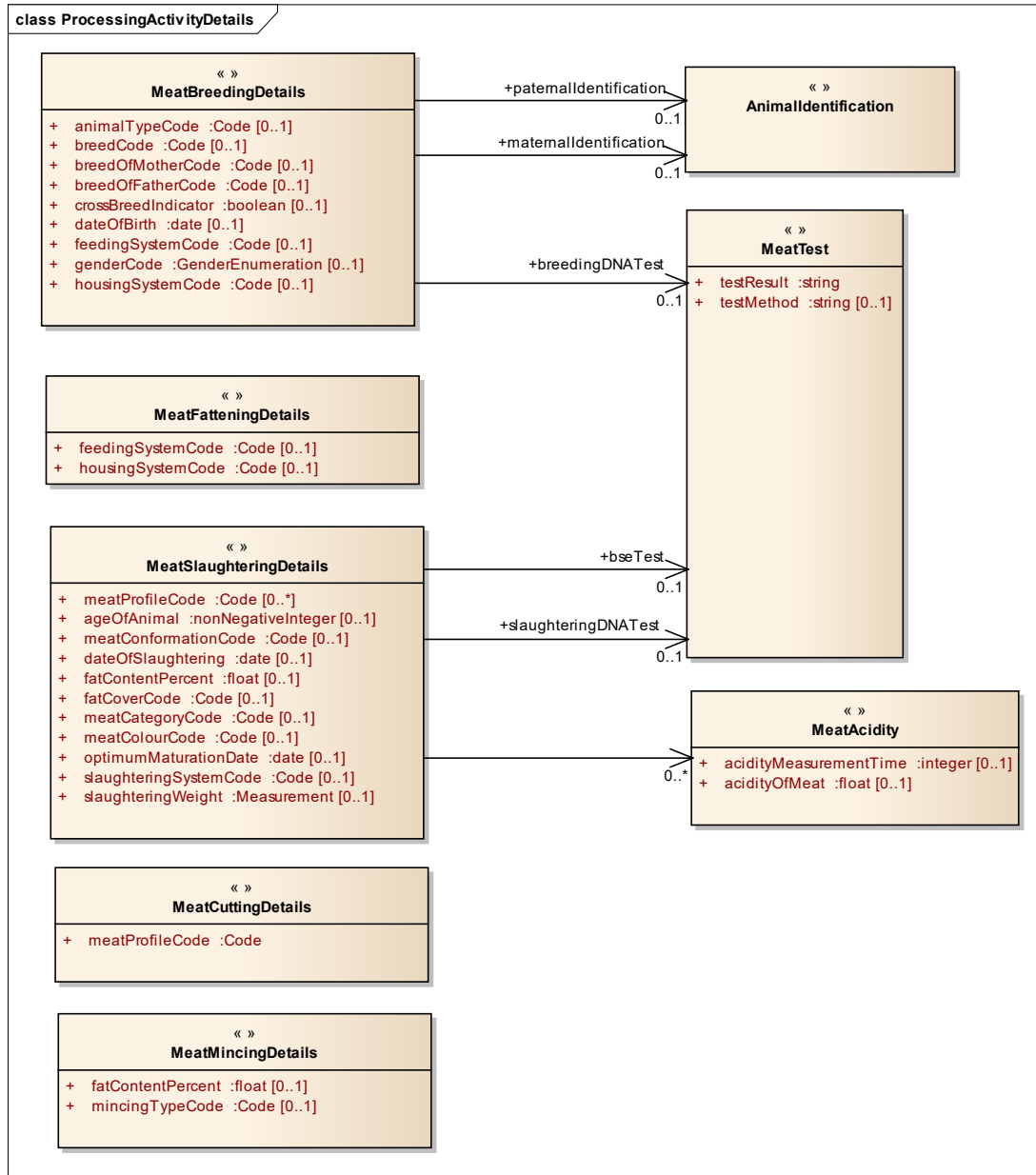


**Note:** Reference Shared Common Library Business Message (BMS) Release 3.4 and eCom Domain Common Library Business Message (BMS) Release 3.4 for all common information.



## 4.4 Processing Activity Details

### Class Diagram



## GDD Report

The content of the MeatBreedingDetails class, its structure and component definitions can be accessed in the Global Data Dictionary: [http://apps.gs1.org/GDD/bms/Version3\\_4/Pages/bieDetails.aspx?semanticURN=urn:gs1:gdd:bie:MeatBreedingDetails](http://apps.gs1.org/GDD/bms/Version3_4/Pages/bieDetails.aspx?semanticURN=urn:gs1:gdd:bie:MeatBreedingDetails)

Content	Attribute / Role	Datatype /Secondary class	Multiplicity	Definition	Requirements
MeatBreedingDetails				Information on the breeding of the meat being processed.	
Association	breedingDNATest	MeatTest	0..1	DNA test used during breeding.	
Association	paternalIdentification	AnimalIdentification	0..1	Identification of the father of the animal.	
Association	maternalIdentification	AnimalIdentification	0..1	Identification of the mother of the animal.	
Attribute	animalTypeCode	Code	0..1	Code specifying the type of animal.	
Attribute	breedCode	Code	0..1	Code specifying the breed of the animal.	
Attribute	breedOfMotherCode	Code	0..1	Code specifying the breed of the mother.	
Attribute	breedOfFatherCode	Code	0..1	Code specifying the breed of the father.	
Attribute	crossBreedIndicator	boolean	0..1	Indicates an animal stemming from parents of different breeds, where the breed of only one parent is known.	renamed from crossBreedCode
Attribute	dateOfBirth	date	0..1	Birth date/time of the animal.	
Attribute	feedingSystemCode	Code	0..1	Code specifying the method of the feeding/fattening.	
Attribute	genderCode	GenderEnumeration	0..1	Code specifying the gender of the animal.	
Attribute	housingSystemCode	Code	0..1	Code specifying the type of housing/holding of the animal.	

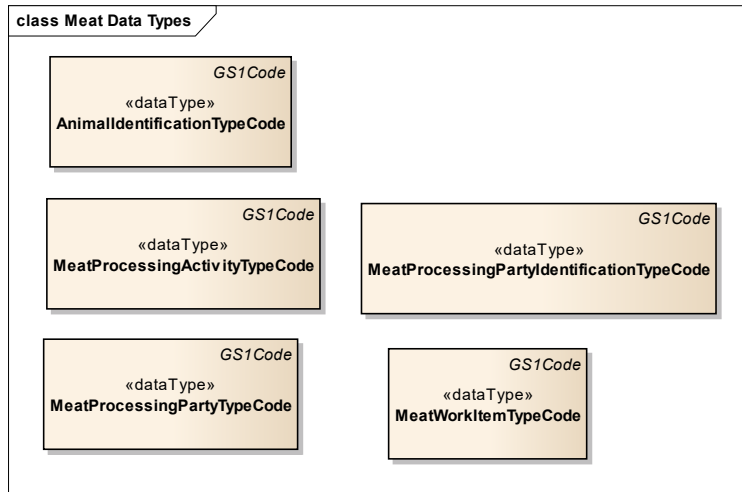


**Note:** Reference Shared Common Library Business Message (BMS) Release 3.4 and eCom Domain Common Library Business Message (BMS) Release 3.4 for all common information.



## 4.5 Data Types

### Class Diagram



### GDD Report

Content	Attribute / Role	Datatype / Secondary class	Multiplicity	Definition	Requirements
AnimalIdentificationTypeCode				Code specifying an animal identification type. Allowed code values are specified in GS1 Code List AnimalIdentificationTypeCode.	
Generalization		GS1Code			
MeatProcessingActivityTypeCode				Code specifying a meat processing activity type. Allowed code values are specified in GS1 Code List MeatProcessingActivityTypeCode.	
Generalization		GS1Code			



Content	Attribute / Role	Datatype /Secondary class	Multiplicity	Definition	Requirements
MeatProcessingPartyIdentificationTypeCode				Code specifying a meat processing party identification type. Allowed code values are specified in GS1 Code List MeatProcessingPartyIdentificationTypeCode.	
Generalization		GS1Code			
MeatProcessingPartyTypeCode				Code specifying a meat processing party type. Allowed code values are specified in GS1 Code List MeatProcessingPartyTypeCode.	
Generalization		GS1Code			
MeatWorkItemTypeCode				Code specifying a meat work item type. Allowed code values are specified in GS1 Code List MeatWorkItemTypeCode.	
Generalization		GS1Code			



**Note:** Reference Shared Common Library Business Message (BMS) Release 3.4 and eCom Domain Common Library Business Message (BMS) Release 3.4 for all common information.

## 4.6 Enumerations (message specific)

Not applicable

## 4.7 Code Lists

Class	Codelist	Referenced in
MeatActivityHistory	MeatProcessingActivityTypeCode	<a href="http://apps.gs1.org/GDD/Pages/clDetails.aspx?semanticURN=urn:gs1:gdd:cl:MeatProcessingActivityTypeCode">http://apps.gs1.org/GDD/Pages/clDetails.aspx?semanticURN=urn:gs1:gdd:cl:MeatProcessingActivityTypeCode</a>
MeatActivityHistory	CountryCode	<a href="http://apps.gs1.org/GDD/Pages/clDetails.aspx?semanticURN=urn:gs1:gdd:cl:CountryCode">http://apps.gs1.org/GDD/Pages/clDetails.aspx?semanticURN=urn:gs1:gdd:cl:CountryCode</a>
AnimalIdentification	AnimalIdentificationTypeCode	<a href="http://apps.gs1.org/GDD/Pages/clDetails.aspx?semanticURN=urn:gs1:gdd:cl:AnimalIdentificationTypeCode">http://apps.gs1.org/GDD/Pages/clDetails.aspx?semanticURN=urn:gs1:gdd:cl:AnimalIdentificationTypeCode</a>
MeatProcessingParty	MeatProcessingPartyTypeCode	<a href="http://apps.gs1.org/GDD/Pages/clDetails.aspx?semanticURN=urn:gs1:gdd:cl:MeatProcessingPartyTypeCode">http://apps.gs1.org/GDD/Pages/clDetails.aspx?semanticURN=urn:gs1:gdd:cl:MeatProcessingPartyTypeCode</a>
MeatProcessingParty	MeatProcessingPartyIdentificationTypeCode	<a href="http://apps.gs1.org/GDD/Pages/clDetails.aspx?semanticURN=urn:gs1:gdd:cl:MeatProcessingPartyIdentificationTypeCode">http://apps.gs1.org/GDD/Pages/clDetails.aspx?semanticURN=urn:gs1:gdd:cl:MeatProcessingPartyIdentificationTypeCode</a>
MeatWorkItemIdentification	MeatWorkItemTypeCode	<a href="http://apps.gs1.org/GDD/Pages/clDetails.aspx?semanticURN=urn:gs1:gdd:cl:MeatWorkItemTypeCode">http://apps.gs1.org/GDD/Pages/clDetails.aspx?semanticURN=urn:gs1:gdd:cl:MeatWorkItemTypeCode</a>
MeatBreedingDetails	GenderEnumeration	<a href="http://apps.gs1.org/GDD/Pages/clDetails.aspx?semanticURN=urn:gs1:gdd:cl:GenderEnumeration">http://apps.gs1.org/GDD/Pages/clDetails.aspx?semanticURN=urn:gs1:gdd:cl:GenderEnumeration</a>



**Note:** Refer to the Global Data Dictionary (GDD) for the code values.

## 5 Business Message Examples

### 5.1 Example 1

This is an example of the eBmeat Line Item Extension to the Despatch Advice message, containing the **aggregated detailed origin and production history**.

#### Process step 1: Producer

Address of the producer:  
 Name: Producer company  
 Street: Backstreet 133  
 City: Brussels  
 Postal code: 12345  
 Country: Belgium

The following animals are born on the farm of the producer:

Animal ID	AU71244008	AU71244009	AU71244010
Date of birth	01.01.2004	02.01.2004	01.01.2004
Gender	male	male	male

Breed	Jersey	Jersey	Jersey
Country of birth	Belgium	Belgium	Belgium
Feeding system	organic	intensive organic	Intensiveorganic
Holding system	predominantly barn	predominantly barn	predominantly barn
Paternal Identification	AU71244111	AU71244112	AU71244113
Breed of father	Jersey	Jersey	Jersey
Maternal Identification	AU71244222	AU71244223	AU71244224
Breed of mother	Jersey	Jersey	Jersey
Reason for movement	sale for fattening	sale for fattening	sale for fattening
Date of departure	01.03.2004	01.03.2004	01.03.2004

**Process step 2: Fattening farm 1**

Address of the fattening farm 1:

Name: Fattening company

Street: Bigstreet 5

City: Amsterdam

Postal code: 34567

Country: Netherlands

Animal ID	AU71244008	AU71244009	AU71244010
Date of arrival	02.03.2004	02.03.2004	02.03.2004
Country of fattening	Netherlands	Netherlands	Netherlands
Feeding system	Not specified	Organic	Not specified
Holding system	predominantly pasture	predominantly pasture	predominantly pasture
Reason for movement	sale for fattening	sale for fattening	sale for fattening
Date of departure	01.06.2004	01.06.2004	01.06.2004

**Process step 3: Fattening farm 2**

Address of the fattening farm 2:

Name: Fettmann KG

Street: Kanalstraße 33

City: Köln

Postal code: 50825

Country: Germany

Animal ID	AU71244008	AU71244009	AU71244010
Date of arrival	02.06.2004	02.06.2004	02.06.2004
Country of fattening	Germany	Germany	Germany
Feeding system	Intensive	Intensive	Intensive
Holding system	predominantly pasture	predominantly pasture	predominantly pasture
Reason for movement	sale for slaughtering	sale for slaughtering	sale for slaughtering
Date of departure	02.09.2004	02.09.2004	02.09.2004



**Process step 4: slaughterhouse**

A shipment of cows from the “Fattermanettmann company” is received September 93th, 2004. The slaughterhouse records the information regarding the rearing of each cattle or the data are stored in a central data base for the supply chain. The cows are slaughtered and each carcass is identified with the GTIN and ear-tag number of the cow it is derived from.

GLN of the slaughterhouse: 4012345000009  
 Slaughterhouse approval number: BE234

GTIN	40123450000166	40123450000166	40123450000166
Animal ID	AU71244008	AU71244009	AU71244010
Date of arrival	03.09.2004	03.09.2004	03.09.2004
Country of Slaughtering	Belgium	Belgium	Belgium
Date of slaughter	04.09.2004	04.09.2004	05.09.2004
Slaughtering weight	280,3 kg	285,7 kg	290,6 kg
Slaughter system	halal	kosher	Halal
Category (UN/ECE)	young intact male	heifer	Young intact male
Conformation (SEUROP)	SE	S	E
Fat cover (UN/ECE)	Not specified	Peeled Denuded	Not specified
Reason for movement	Sale for cutting	Sale for cutting	Sale for cutting
Date of departure	05.09.2004	05.09.2004	05.09.2004

The slaughterhouse prepares a shipment identified with number “BE59-351-6098” on September 5th, under trading partner agreement “BE59.BEF2-CT-2”, to the cutting plant with the GLN 4000005000070; the shipment consists of the carcasses of the received and slaughtered cows.

The message sent from the slaughterhouse to the cutting hall 1 contains the following information (related to the product respectively GTIN):

Trade Item Identification	Animal Identification	
GTIN	Animal ID	
40123450000166	AU71244008	Meat history information (origin and processing history)
	Activity History	
	Current step identification	1
	Next step identification	2
	Activity Type:	Breeding
	Activity Step	
	Country of activity	Belgium
	Performer Type	Breeder
	Performer Identification:	Name: Producer company Street: Backstreet 133 City: Brussels Postal code: 12345 Country: Belgium
	Date of departure	01.03.2004
	Reason for movement	sale for fattening
	Work Item Identification	
	Animal Id	AU71244008
	Work Item Type	Animal
		Meat Despatch Information



Breeding Details	
Date of birth	01.01.2004
Gender	male
Breed	Jersey
Feeding system	organic
Holding system	predominantly barn
Paternal Identification	AU71244111
Breed of father	Jersey
Maternal Identification	AU71244222
Breed of mother	Jersey

**Activity History**

Current step identification 2  
 Next step identification 3  
 Activity Type: Fattening  
 Activity Step 1  
 Country of activity Netherlands  
 Performer Type Fattener  
 Performer Identification: Name: Fattening company  
 Street: Bigstreet 5  
 City: Amsterdam  
 Postal code: 34567  
 Country: Netherlands  
 Date of arrival 02.03.2004  
 Date of departure 01.06.2004  
 Reason for movement sale for fattening

Work Item Identification	
AnimalID	AU71244008
Work Item Type	Animal

Meat Despatch Information	
Fattening	
Feeding system	Not specified
Holding system	predominantly pasture

**Activity History**

Current step identification 3  
 Next step identification 4  
 Activity Type: Fattening  
 Activity Step 2  
 Country of activity Germany  
 Performer Type Fattener  
 Performer Identification: Name: Fettmann KG  
 Street: Kanalstraße 33  
 City: Köln  
 Postal code: 50825  
 Country: Germany  
 Date of arrival 02.06.2004  
 Date of departure 02.09.2004  
 Reason for movement sale for slaughtering

Work Item Identification	
Animal ID	AU71244008
Work Item Type	Animal

Meat Despatch Information	
Fattening	
Feeding system	Intensive
Holding system	predominantly pasture

**Activity History**

Current step identification 4  
 Next Stage Id  
 Activity Type: Slaughtering  
 Activity Step  
 Country of activity Belgium  
 Performer Type Slaughterer  
 Performer Identification: GLN: 4012345000009  
 ApprovalNumber:BE234



Date of arrival 03.09.2004  
 Date of departure 05.09.2004  
 Reason for movement sale for cutting

Work Item Identification  
 GTIN 40123450000166  
 Animal ID AU71244008  
 Work Item Type Carcass  
 4012345000016 AU71244008

Meat Despatch Information  
 slaughteringDetailsSlaughtering  
 Date of slaughter 04.09.2004  
 Slaughtering weight 280,3 kg  
 Slaughter system halal  
 Category (UN/ECE) young intact male  
 Conformation (SEUROP) SE  
 Fat cover (UN/ECE) Not specified

Trade Item Identification  
 Item Sub Identification  
 GTIN Animal ID  
 40123450000166 AU71244009

Meat history information (origin and processing history)

.....

**Process step 5: Cutting plant 1**

A shipment of carcasses from slaughterhouse with the GLN 4012345000009 is received by the cutting plant 1 identified with GLN 4000005000070 (cutting plant approval number: FR2345) on September 5th, 2004. Two of the carcasses are converted into a batch of primal cuts (product A). Product A is identified with GTIN 4000005009998 and batch number FR2-NB-1523 and consists of the carcasses with the ID's:

- GTIN 40123450000166 / Animal ID AU71244008
- GTIN 40123450000166 / Animal ID AU71244010.

The third carcass is converted into a different product (product B). Product B is identified with GTIN 4000005001114 and batch number FR2-ZZ-9999 and consists of the carcass with the ID:

- GTIN 40123450000166 / Animal ID AU71244009

Product	A	B
GTIN	4000005009998	4000005001114
Batch number	FR2-NB-1523	FR2-ZZ-9999
Date of arrival	05.09.2004	05.09.2004
Country of cutting	France	France
UN/ECE classification	1164353010400015000	
Date of departure	07.09.2004	07.09.2004

A shipment to cutting hall 2 is prepared on September 7th, 2004 and consists of the products derived from the received carcasses.

The message sent from cutting plant 1 to cutting plant 2 contains the following information (related to the product respectively GTIN):

TradeItem Identification  
 ItemSub Identification  
 GTIN Additional ID

4000005009998 FR2-NB-1523 Meat history information (origin and processing history)

Activity History

Current step identification 1



Next step identification 2  
 Activity Type: Breeding  
 Activity Step  
 Country of activity Belgium  
 Performer Type Breeder  
 Performer Identification: Name: Producer company  
 Street: Backstreet 133  
 City: Brussels  
 Postal code: 12345  
 Country: Belgium  
 Date of departure 01.03.2004  
 Reason for movement sale for fattening

Work Item Identification	
Animal ID	AU71244008
Work Item Type	Animal

Meat Despatch Information	
Breeding	
Date of birth	01.01.2004
Gender	male
Breed	Jersey
Feeding system	organic
Holding system	predominantly barn
Paternal Identification	AU71244111
Breed of father	Jersey
Maternal Identification	AU71244222
Breed of mother	Jersey

Work Item Identification	
Animal ID	AU71244010
Work Item Type	Animal

Meat Despatch Information	
Breeding	
Date of birth	01.01.2004
Gender	male
Breed	Jersey
Feeding system	organic
Holding system	predominantly barn
Paternal Identification	AU71244113
Breed of father	Jersey
Maternal Identification	AU71244224
Breed of mother	Jersey

**Activity History**

Current step identification 2  
 Next step identification 3  
 Activity Type: Fattening  
 Activity Step 1  
 Country of activity Netherlands  
 Performer Type Fattener  
 Performer Identification: Name: Fattening company  
 Street: Bigstreet 5  
 City: Amsterdam  
 Postal code: 34567  
 Country: Netherlands  
 Date of arrival 02.03.2004  
 Date of departure 01.06.2004  
 Reason for movement sale for fattening

Work Item Identification	
Animal ID	AU71244008
Work Item Type	Animal

Meat Despatch Information	
Fattening Details	
Feeding system	Not specified
Holding system	predominantly pasture

Work Item Identification	
Animal ID	AU71244010





Work Item Type		Animal	Meat Despatch Information	
			Fattening Details	
			Feeding system	Not specified
			Holding system	predominantly pasture
Activity History				
		Current step identification	3	
		Next step identification	4	
		Activity Type:	Fattening	
		Activity Step	2	
		Country of activity	Germany	
		Performer Type	Fattener	
		Performer Identification:	Name: Fettmann KG Street: Kanalstraße 33 City: Köln Postal code: 50825 Country: Germany	
		Date of arrival	02.06.2004	
		Date of departure	02.09.2004	
		Reason for movement	sale for slaughtering	
Work Item Identification				
Animal ID		AU71244008		
Work tem Type		Animal		
			Meat Despatch Information	
			Fattening Details	
			Feeding system	Intensive
			Holding system	predominantly pasture
Work Item Identification				
Animal ID		AU71244010		
Work tem Type		Animal		
			Meat Despatch Information	
			Fattening Details	
			Feeding system	Intensive
			Holding system	predominantly pasture
Activity History				
		Current step identification	4	
		Next step identification	5	
		Activity Type:	Slaughtering	
		Activity Step		
		Country of activity	Belgium	
		Performer Type	Slaughterer	
		Performer Identification:	GLN: 4012345000009 ApprovalNumber:BE234	
		Date of arrival	03.09.2004	
		Date of departure	05.09.2004	
		Reason for movement	sale for cutting	
Work Item Identification				
GTIN		40123450000166		
Animal ID		AU71244008		
Work Item Type		Carcass		
			Meat Despatch Information	
			Slaughtering Details	
		Date of slaughter	04.09.2004	
		Slaughtering weight	280,3 kg	
		Slaughter system	halal	
		Category (UN/ECE)	young intact male	
		Conformation (SEUROP)	E	
		Fat cover (UN/ECE)	Not specified	
Work Item Identification				
GTIN		40123450000166		
Animal ID		AU71244010		
Work Item Type		Carcass		
			Meat Despatch Information	
			Slaughtering Details	
		Date of slaughter	04.09.2004	



Slaughtering weight	290,6 kg
Slaughter system	halal
Category (UN/ECE)	Young intact male
Conformation (SEUROP)	E
Fat cover (UN/ECE)	Not specified

**Activity History**

Current step identification 5  
 Next step identification  
 Activity Type: Cutting  
 Activity Step 1  
 Country of activity France  
 Performer Type Cutter  
 Performer Identification: GLN: 400005000070  
 Approval Number: FR2345  
 Date of arrival 05.09.2004  
 Date of departure 07.09.2004

Work Item Identification	
GTIN	400005009998
Batch Number	FR2-NB-1523
Work Item Type	Meat

Meat Despatch Information	
Cutting Details	
UN/ECE classification	1164353010400015000

GTIN	Additional ID
------	---------------

4000050011144	FR2-ZZ-9999	Meat history information (origin and processing history)
---------------	-------------	--

.....

**Process step 6: Cutting plant 2**

A shipment of 2 products of primal cuts from cutting plant 1 is received by the cutting hall 2 identified with GLN 4400999000016 (approval number of cutting hall DK98767) on September 8th, 2004.

Each batch is processed separately and converted into a single batch of secondary cuts.

Product A (GTIN 400005009998 / batch number FR2-NB-1523) is converted in product C identified with GTIN 44009990009933 and batch number DK3296.

Product B (GTIN 400005001114 / batch number FR2-ZZ-9999) is converted in product D GTIN 44009990004433 and batch number "DK9999".

Product	C	D
GTIN	44009990009933	44009990004433
Batch number	DK3296	DK9999
Date of arrival	08.09.2004	08.09.2004
Country of cutting	Denmark	Denmark
UN/ECE classification	1164353010400017999	
Date of departure	10.09.2004	10.09.2004

A shipment to the mincer consisting of the two products is prepared on September 10th, 2004.

The message sent from cutting plant 2 to the mincer contains the following information (related to the product respectively GTIN):

Trade Item Identification	Item Sub Identification
GTIN	Additional ID

44009990009933	DK3296	Meat history information (origin and processing history)
----------------	--------	--

**Activity History**



Current step identification 1  
 Next step identification 2  
 Activity Type: Breeding  
 Activity Step  
 Country of activity Belgium  
 Performer Type Breeder  
 Performer Identification: Name: Producer company  
 Street: Backstreet 133  
 City: Brussels  
 Postal code: 12345  
 Country: Belgium  
 Date of departure 01.03.2004  
 Reason for movement sale for fattening

Work Item Identification  
 Animal ID AU71244008  
 Work Item Type Animal

Meat Despatch Information  
 Breeding Details  
 Date of birth 01.01.2004  
 Gender male  
 Breed Jersey  
 Feeding system organic  
 Holding system predominantly barn  
 Paternal Identification AU71244111  
 Breed of father Jersey  
 Maternal Identification AU71244222  
 Breed of mother Jersey

Work Item Identification  
 Animal ID AU71244010  
 Work Item Type Animal

Meat Despatch Information  
 Breeding Details  
 Date of birth 01.01.2004  
 Gender male  
 Breed Jersey  
 Feeding system organic  
 Holding system predominantly barn  
 Paternal Identification AU71244113  
 Breed of father Jersey  
 Maternal Identification AU71244224  
 Breed of mother Jersey

Activity History

Current step identification 2  
 Next step identification 3  
 Activity Type: Fattening  
 Activity Step 1  
 Country of activity Netherlands  
 Performer Type Fattener  
 Performer Identification: Name: Fattening company  
 Street: Bigstreet 5  
 City: Amsterdam  
 Postal code: 34567  
 Country: Netherlands  
 Date of arrival 02.03.2004  
 Date of departure 01.06.2004  
 Reason for movement sale for fattening

Work Item Identification  
 Animal ID AU71244008  
 Work Item Type Animal

Meat Despatch Information  
 fatteningDetails  
 Feeding system Not specified  
 Holding system predominantly pasture

Work Item Identification



Animal ID AU71244010		Meat Despatch Information	
Work Item Type Animal		Fattening Details	
		Feeding system	Not specified
		Holding system	predominantly pasture
<b>Activity History</b>			
Current step identification		3	
Next step identification		4	
Activity Type:		Fattening	
Activity Step		2	
Country of activity		Germany	
Performer Type		Fattener	
Performer Identification:		Name: Fettmann KG	
		Street: Kanalstraße 33	
		City: Köln	
		Postal code: 50825	
		Country: Germany	
Date of arrival		02.06.2004	
Date of departure		02.09.2004	
Reason for movement		sale for slaughtering	
<b>WorkItemIdentification</b>			
Animal ID AU71244008		Meat Despatch Information	
Work Item Type Animal		Fattening Details	
		Feeding system	Intensive
		Holding system	predominantly pasture
<b>Work Item Identification</b>			
Animal ID AU71244010		Meat Despatch Information	
Work Item Type Animal		Fattening Details	
		Feeding system	Intensive
		Holding system	predominantly pasture
<b>Activity History</b>			
Current step identification		4	
Next step identification		5	
Activity Type:		Slaughtering	
Activity Step			
Country of activity		Belgium	
Performer Type		Slaughterer	
Performer Identification:		GLN: 4012345000009	
		ApprovalNumber:BE234	
Date of arrival		03.09.2004	
Date of departure		05.09.2004	
Reason for movement		sale for cutting	
<b>Work Item Identification</b>			
GTIN	40123450000166	Meat Despatch Information	
Animal ID	AU71244008	Slaughtering Details	
Work Item Type	Carcass	Date of slaughter	04.09.2004
		Slaughtering weight	280,3 kg
		Slaughter system	halal
		Category (UN/ECE)	young intact male
		Conformation (SEUROP)	E
		Fat cover (UN/ECE)	Not specified
<b>Work Item Identification</b>			
GTIN	40123450000166	Meat Despatch Information	
Animal ID	AU71244010	Slaughtering Details	
Work Item Type	Carcass		



Country of Slaughtering	Belgium
Date of slaughter	04.09.2004
Slaughtering weight	290,6 kg
Slaughter system	halal
Category (UN/ECE)	Young intact male
Conformation (SEUROP)	E
Fat cover (UN/ECE)	Not specified

**Activity History**

Current step identification 5  
 Next step identification 6  
 Activity Type: Cutting  
 Activity Step 1  
 Country of activity Belgium  
 Performer Type Cutter  
 Performer Identification: GLN: 4000005000070  
 Approval Number: FR2345  
 Date of arrival 05.09.2004  
 Date of departure 07.09.2004

Work Item Identification	
GTIN	40000050099988
Batch Number	FR2-NB-1523
Work tem Type	Meat

**Meat Despatch Information  
Cutting Details**

UN/ECE classification 1164353010400015000

**Activity History**

Current step identification 6  
 Next step identification  
 Activity Type: Cutting  
 Activity Step 2  
 Performer Type Cutter  
 Performer Identification: GLN: 4400999000016  
 Approval Number: DK98767  
 Date of arrival 08.09.2004  
 Date of departure 10.09.2004

Work Item Identification	
GTIN	44009990009933
Batch Number	DK3296
Work tem Type	Meat

**Meat Despatch Information  
Cutting Details**

UN/ECE classification 1164353010400017999

**GTIN Additional ID**

4400999000443 DK9999 Meat history information (origin and processing history)

.....

**Process step 6: Mincer**

A shipment of 2 products of secondary cuts from cutting plant 2 is received by the mincer identified with GLN 4055555999992 on September 12th, 2004.

Product C identified with GTIN 44009990009933 and batch number DK3296 is converted into minced beef identified with GTIN 4055555000568 and batch number NL1232.

GTIN	40555550005688
Batch number	NL1232
Date of arrival	12.09.2004
Fat content	40 %
Country of cutting	Netherlands
Date of departure	13.09.2004



The message sent from the mincer to the retailer contains the following information (related to the product respectively GTIN):

Trade Item Identification	Item Sub Identification	Meat history information (origin and processing history)
GTIN	Additional ID	
4055550005688	NL1232	

Activity History

Current step identification 1  
 Next step identification 2  
 Activity Type: Breeding  
 Activity Step  
 Country of activity Belgium  
 Performer Type Breeder  
 Performer Identification: Name: Producer company  
 Street: Backstreet 133  
 City: Brussels  
 Postal code: 12345  
 Country: Belgium  
 Date of departure 01.03.2004  
 Reason for movement sale for fattening

Work Item Identification	
Animal ID	AU71244008
Work Item Type	Animal

Meat Despatch Information

Breeding Details	
Date of birth	01.01.2004
Gender	male
Breed	Jersey
Feeding system	organic
Holding system	predominantly barn
Paternal Identification	AU71244111
Breed of father	Jersey
Maternal Identification	AU71244222
Breed of mother	Jersey

Work Item Identification	
Animal ID	AU71244010
Work Item Type	Animal

Meat Despatch Information

breedingDetails	
Date of birth	01.01.2004
Gender	male
Breed	Jersey
Feeding system	organic
Holding system	predominantly barn
Paternal Identification	AU71244113
Breed of father	Jersey
Maternal Identification	AU71244224
Breed of mother	Jersey

Activity History



Current step identification 2  
 Next step identification 3  
 Activity Type: Fattening  
 Activity Step 1  
 Country of activity Netherlands  
 Performer Type Fattener  
 Performer Identification: Name: Fattening company  
 Street: Bigstreet 5  
 City: Amsterdam  
 Postal code: 34567  
 Country: Netherlands  
 Date of arrival 02.03.2004  
 Date of departure 01.06.2004  
 Reason for movement sale for fattening

Work Item Identification  
 Animal ID AU712440  
 08  
 Work Item Type Animal

Meat Despatch Information  
 Fattening Details  
 Feeding system Not specified  
 Holding system predominantly pasture

Work Item Identification  
 Animal ID AU712440  
 10  
 Work Item Type Animal

Meat Despatch Information  
 Fattening Details  
 Feeding system Not specified  
 Holding system predominantly pasture

Activity History

Current step identification 3  
 Next step identification 4  
 Activity Type: Fattening  
 Activity Step 2  
 Country of activity Germany  
 Performer Type Fattener  
 Performer Identification: Name: Fettmann KG  
 Street: Kanalstraße 33  
 City: Köln  
 Postal code: 50825  
 Country: Germany  
 Date of arrival 02.06.2004  
 Date of departure 02.09.2004  
 Reason for movement sale for slaughtering

Work Item Identification  
 Animal ID AU712440  
 08  
 Work Item Type Animal

Meat Despatch Information  
 Fattening Details  
 Country of fattening Germany  
 Feeding system Intensive  
 Holding system predominantly pasture

Work Item Identification  
 Animal ID AU712440  
 10  
 Work Item Type Animal

Meat Despatch Information



		<b>Fattening Details</b>	
	Country of fattening	Germany	
	Feeding system	Intensive	
	Holding system	predominantly pasture	
<b>Activity History</b>			
	Current step identification	4	
	Next step identification	5	
	Activity Type:	Slaughtering	
	Activity Step		
	Country of activity	Belgium	
	Performer Type	Slaughterer	
	Performer Identification:	GLN: 4012345000009 ApprovalNumber:BE234	
	Date of arrival	03.09.2004	
	Date of departure	05.09.2004	
	Reason for movement	sale for cutting	
	<b>Work Item Identification</b>		
	GTIN	401234500 00166	
	Animal ID	AU712440 08	
	Work tem Type	Carcass	
		<b>Meat Despatch Information</b>	
		<b>Slaughtering Details</b>	
	Date of slaughter	04.09.2004	
	Slaughtering weight	280,3 kg	
	Slaughter system	halal	
	Category (UN/ECE)	young intact male	
	Conformation (SEUROP)	E	
	Fat cover (UN/ECE)	Not specified	
	<b>Work Item Identification</b>		
	GTIN	401234500 00166	
	Animal ID	AU712440 10	
	Work tem Type	Carcass	
		<b>Meat Despatch Information</b>	
		<b>Slaughtering Details</b>	
	Country of Slaughtering	Belgium	
	Date of slaughter	04.09.2004	
	Slaughtering weight	290,6 kg	
	Slaughter system	halal	
	Category (UN/ECE)	Young intact male	
	Conformation (SEUROP)	E	
	Fat cover (UN/ECE)	Not specified	
<b>ActivityHistory</b>			
	Current step identification	5	
	Next step identification	6	
	Activity Type:	Cutting	
	Activity Step	1	
	Country of activity	Belgium	
	Performer Type	Cutter	





Performer Identification: GLN: 4000005000070  
 Approval Number: FR2345  
 Date of arrival 05.09.2004  
 Date of departure 07.09.2004

Work Item Identification  
 GTIN 400000500  
 99988  
 Batch FR2-NB-  
 Number 1523  
 Work tem Meat  
 Type

Meat Despatch Information  
 Cutting Details  
 UN/ECE 11643530104000  
 classification 15000

Activity History

Current step identification 6  
 Next step identification 7  
 Activity Type: Cutting  
 Activity Step 2  
 Country of activity Denmark  
 Performer Type Cutter  
 Performer Identification: GLN: 4400999000016  
 Approval Number: DK98767  
 Date of arrival 08.09.2004  
 Date of departure 10.09.2004

Work Item Identification  
 GTIN 440099900  
 09933  
 Batch DK3296  
 Number  
 Work tem Meat  
 Type

Meat Despatch Information  
 Cutting Details  
 UN/ECE 11643530104000  
 classification 17999

Activity History

Current step identification 7  
 Next step identification  
 Activity Type: Mincing  
 Activity Step 1  
 Country of activity Netherlands  
 Performer Type Mincer  
 Performer Identification: GLN: 4055555999992  
 Date of arrival 12.09.2004  
 Date of departure 13.09.2004

Work Item Identification  
 GTIN 405555500  
 05688  
 Batch NL1232  
 Number  
 Work tem Trade Item  
 Type

Meat Despatch Information  
 Mincing Details  
 Fat content 40 %

Process step 7: Retailer

A shipment of one batch of consumer units from the mincer is received September 30th, 2004.

The batch is made available for sale at a retail outlet October 1st, 2004.

## 5.2 Example 2

This is an example of the eBmeat Line Item Extension to the Despatch Advice message, containing the **restricted origin and production history**.

### Process step 1: Producer

Address of the producer:  
 Name: Producer company  
 Street: Backstreet 133  
 City: Brussels  
 Postal code: 12345  
 Country: Belgium

The following animals are born on the farm of the producer:

Animal ID	AU71244008	AU71244009	AU71244010
Date of birth	01.01.2004	02.01.2004	01.01.2004
Gender	male	male	male
Breed	Jersey	Jersey	Jersey
Country of birth	Belgium	Belgium	Belgium
Feeding system	organic	intensive	organic
Holding system	predominantly barn	predominantly barn	predominantly barn
Paternal Identification	AU71244111	AU71244112	AU71244113
Breed of father	Jersey	Jersey	Jersey
Maternal Identification	AU71244222	AU71244223	AU71244224
Breed of mother	Jersey	Jersey	Jersey
Reason for movement	sale for fattening	sale for fattening	sale for fattening
Date of departure	01.03.2004	01.03.2004	01.03.2004

### Process step 2: Fattening farm 1

Address of the fattening farm 1:  
 Name: Fattening company  
 Street: Bigstreet 5  
 City: Amsterdam  
 Postal code: 34567  
 Country: Netherlands

Animal ID	AU71244008	AU71244009	AU71244010
Date of arrival	02.03.2004	02.03.2004	02.03.2004
Country of fattening	Netherlands	Netherlands	Netherlands
Feeding system	Not specified	Organic	Not specified
Holding system	predominantly pasture	predominantly pasture	predominantly pasture
Reason for movement	sale for fattening	sale for fattening	sale for fattening



## Standard (BMS)

Date of departure	01.06.2004	01.06.2004	01.06.2004
-------------------	------------	------------	------------

**Process step 3: Fattening farm 2**

Address of the fattening farm 2:

Name: Fettmann KG  
 Street: Kanalstraße 33  
 City: Köln  
 Postal code: 50825  
 Country: Germany

Animal ID	AU71244008	AU71244009	AU71244010
Date of arrival	02.06.2004	02.06.2004	02.06.2004
Country of fattening	Germany	Germany	Germany
Feeding system	Intensive	Intensive	Intensive
Holding system	predominantly pasture	predominantly pasture	predominantly pasture
Reason for movement	sale for slaughtering	sale for slaughtering	sale for slaughtering
Date of departure	02.09.2004	02.09.2004	02.09.2004

**Process step 4: slaughterhouse**

A shipment of cows from the "Fettmann company" is received September 3th, 2004. The the information regarding the rearing of each cattle are stored in a data base. The cows are slaughtered and each carcass is identified with the GTIN and ear-tag number of the cow it is derived from.

GLN of the slaughterhouse: 4012345000009

Slaughterhouse approval number: BE234

GTIN	40123450000166	40123450000166	40123450000166
Animal ID	AU71244008	AU71244009	AU71244010
Date of arrival	03.09.2004	03.09.2004	03.09.2004
Country of Slaughtering	Belgium	Belgium	Belgium
Date of slaughter	04.09.2004	04.09.2004	05.09.2004
Slaughtering weight	280,3 kg	285,7 kg	290,6 kg
Slaughter system	halal	kosher	Halal
Category (UN/ECE)	young intact male	heifer	Young intact male
Conformation (SEUROP)	E	S	E
Fat cover (UN/ECE)	Not specified	Peeled Denuded	Not specified
Reason for movement	Sale for cutting	Sale for cutting	Sale for cutting
Date of departure	05.09.2004	05.09.2004	05.09.2004

The slaughterhouse prepares a shipment identified with number "BE59-351-6098" on September 5th, under trading partner agreement "BEF2-CT-2", to the cutting plant with the GLN 4000005000070; the shipment consists of the carcasses of the received and slaughtered cows.



Standard (BMS)

The message sent from the slaughterhouse to cutting plant 1 contains the following information (related to the product respectively GTIN):

Trade Item Identification	Animal Identification	
GTIN	AnimalID	
40123450000166	AU71244008	<b>Meat history information (origin and processing history)</b>
	<b>Activity History</b>	
		Current step identification 1 Next step identification 2 Activity Type: Breeding Activity Step Country of activity Belgium Performer Type Breeder Performer Identification: Name: Producer company Street: Backstreet 133 City: Brussels Postal code: 12345 Country: Belgium Date of departure 01.03.2004 Reason for movement sale for fattening
		<b>Meat Despatch Information</b>
		<b>Breeding Details</b>
		Date of birth 01.01.2004 Gender male Breed Jersey Feeding system organic Holding system predominantly barn Paternal Identification AU71244111 Breed of father Jersey Maternal Identification AU71244222 Breed of mother Jersey
	<b>Activity History</b>	
		Current step identification 2 Next Stage Id 3 Activity Type: Fattening Activity Step 1 Country of activity Netherlands Performer Type Fattener Performer Identification: Name: Fattening company Street: Bigstreet 5 City: Amsterdam Postal code: 34567 Country: Netherlands Date of arrival 02.03.2004 Date of departure 01.06.2004 Reason for movement sale for fattening
		<b>Meat Despatch Information</b>
		<b>fattening Details</b>
		Feeding system Not specified Holding system predominantly pasture
	<b>Activity History</b>	
		Current step identification 3 Next step identification 4 Activity Type: Fattening Activity Step 2 Country of activity Germany Performer Type Fattener



Performer Identification: Name: Fettmann KG  
 Street: Kanalstraße 33  
 City: Köln  
 Postal code: 50825  
 Country: Germany  
 Date of arrival 02.06.2004  
 Date of departure 02.09.2004  
 Reason for movement sale for slaughtering

Meat Despatch Information fattening Details	
Feeding system	Intensive
Holding system	predominantly pasture

ActivityHistory

Current step identification 4  
 Next Stages Id  
 Activity Type: Slaughtering  
 Activity Step  
 Country of activity Belgium  
 Performer Type Slaughterer  
 Performer Identification: GLN: 4012345000009  
 ApprovalNumber:BE234  
 Date of arrival 03.09.2004  
 Date of departure 05.09.2004  
 Reason for movement sale for cutting

Meat Despatch Information Slaughtering Details	
Date of slaughter	04.09.2004
Slaughtering weight	280,3 kg
Slaughter system	halal
Category (UN/ECE)	young intact male
Conformation (SEUROP)	E
Fat cover (UN/ECE)	Not specified

Trade Item Identification	Item Sub Identification
GTIN	Animal ID
4012345000016	AU71244009

Meat history information (origin and processing history)

.....

Process step 5: Cutting plant 1

A shipment of carcasses from slaughterhouse with the GLN 4012345000009 is received by the cutting plant 1 identified with GLN 4000005000070 (cutting plant approval number: FR2345) on September 5th, 2004. Two of the carcasses are converted into a batch of primal cuts (product A). Product A is identified with GTIN 4000005009998 and batch number FR2-NB-1523 and consists of the carcasses with the ID's:

- GTIN 40123450000166 / Animal ID AU71244008
- GTIN 40123450000166 / Animal ID AU71244010.

The third carcass is converted into a different product (product B). Product B is identified with GTIN 4000005001114 and batch number FR2-ZZ-9999 and consists of the carcass with the ID:

- GTIN 40123450000166 / Animal ID AU71244009

Product	A	B
GTIN	4000005009998	4000005001114
Batch number	FR2-NB-1523	FR2-ZZ-9999
Date of arrival	05.09.2004	05.09.2004



Standard (BMS)

Country of cutting	France	France
UN/ECE classification	1164353010400015000	
Date of departure	07.09.2004	07.09.2004

A shipment to cutting hall 2 is prepared on September 7th, 2004 and consists the products derived from the received carcasses.

The message sent from cutting plant 1 to cutting plant 2 contains the following information (related to the product respectively GTIN):

<b>TradeItem Identification</b>	<b>ItemSub Identification</b>	
<b>GTIN</b>	<b>Additional ID</b>	
40000050099988	FR2-NB-1523	<b>Meat history information (origin and processing history)</b>
	<b>Activity History</b>	
	Current step identification	1
	Next step identification	2
	Activity Type:	Breeding
	Activity Step	
	Country of activity	Belgium
	Performer Type	Breeder
	Performer Identification:	Name: Producer company Street: Backstreet 133 City: Brussels Postal code: 12345 Country: Belgium
	Date of arrival	
	Date of departure	01.03.2004
	Reason for movement	sale for fattening
		<b>Meat Despatch Information</b>
		<b>Breeding Details</b>
		Gender: male
		Breed: Jersey
		Feeding system: organic
		Holding system: predominantly barn
		Breed of father: Jersey
		Breed of mother: Jersey
	<b>Activity History</b>	
	Current step identification	2
	Next step identification	3
	Activity Type:	Fattening
	Activity Step	1
	Country of activity	Netherlands
	Performer Type	Fattener
	Performer Identification:	Name: Fattening company Street: Bigstreet 5 City: Amsterdam Postal code: 34567 Country: Netherlands
	Date of arrival	02.03.2004
	Date of departure	01.06.2004
	Reason for movement	sale for fattening
		<b>Meat Despatch Information</b>
		<b>Fattening Details</b>
		Feeding system: Not specified
		Holding system: predominantly pasture
	<b>Activity History</b>	
	Current step identification	3
	Next step identification	4
	Activity Type:	Fattening



Activity Step 2  
 Country of activity Germany  
 Performer Type Fattener  
 Performer Identification: Name: Fettmann KG  
 Street: Kanalstraße 33  
 City: Köln  
 Postal code: 50825  
 Country: Germany  
 Date of arrival 02.06.2004  
 Date of departure 02.09.2004  
 Reason for movement sale for slaughtering

Meat Despatch Information	
Fattening Details	
Feeding system	Intensive
Holding system	predominantly pasture

Activity History

Current step identification 4  
 Next step identification 5  
 Activity Type: Slaughtering  
 Activity Step  
 Country of activity Belgium  
 Performer Type Slaughterer  
 Performer Identification: GLN: 4012345000009  
 ApprovalNumber:BE234  
 Date of arrival 03.09.2004  
 Date of departure 05.09.2004  
 Reason for movement sale for cutting

Meat Despatch Information	
Slaughtering Details	
Date of slaughter	04.09.2004
Slaughter system	halal
Category (UN/ECE)	young intact male
Conformation (SEUROP)	E
Fat cover (UN/ECE)	Not specified

Activity History

Current step identification 5  
 Next step identification  
 Activity Type: Cutting  
 Activity Step 1  
 Country of activity France  
 Performer Type Cutter  
 Performer Identification: GLN: 4000005000070  
 Approval Number: FR2345  
 Date of arrival 05.09.2004  
 Date of departure 07.09.2004

Meat Despatch Information	
Cutting Details	
UN/ECE classification	1164353010400015000

GTIN	Additional ID	
40000050011144	FR2-ZZ-9999	Meat history information (origin and processing history)

.....

Process step 6: Cutting plant 2

A shipment of 2 products of primal cuts from cutting plant 1 is received by the cutting hall 2 identified with GLN 4400999000016 (approval number of cutting hall DK98767) on September 8th, 2004.

Each batch is processed separately and converted into a single batch of secondary cuts.



Product A (GTIN 4000050099988 / batch number FR2-NB-1523) is converted in product C identified with GTIN 44009990009933 and batch number DK3296.

Product B (GTIN 400005001114 / batch number FR2-ZZ-9999) is converted in product D GTIN 4400999000443 and batch number "DK9999".

Product	C	D
GTIN	44009990009933	44009990004433
Batch number	DK3296	DK9999
Date of arrival	08.09.2004	08.09.2004
Country of cutting	Denmark	Denmark
Date of departure	10.09.2004	10.09.2004

A shipment to the mincer consisting of the two products is prepared on September 10th, 2004.

The message sent from cutting plant 2 to the mincer contains the following information (related to the product respectively GTIN):

TradeItem Identification	ItemSub Identification	Additional ID	
44009990009933	DK3296		<b>Meat history information (origin and processing history)</b>
			<b>Activity History</b>
			Current step identification 1
			Next step identification 2
			Activity Type: Breeding
			Activity Step
			Country of activity Belgium
			Performer Type Breeder
			Performer Identification: Name: Producer company
			Street: Backstreet 133
			City: Brussels
			Postal code: 12345
			Country: Belgium
			Date of departure 01.03.2004
			Reason for movement sale for fattening
			<b>Meat Despatch Information breedingDetails</b>
			Date of birth 01.01.2004
			Gender male
			Breed Jersey
			Feeding system organic
			Holding system predominantly barn
			Breed of father Jersey
			Breed of mother Jersey
			<b>Activity History</b>
			Current step identification 2
			Next step identification 3
			Activity Type: Fattening
			Activity Step 1
			Country of activity Netherlands
			Performer Type Fattener
			Performer Identification: Name: Fattening company
			Street: Bigstreet 5
			City: Amsterdam
			Postal code: 34567
			Country: Netherlands
			Date of arrival 02.03.2004
			Date of departure 01.06.2004
			Reason for movement sale for fattening





Meat Despatch Information	
Fattening Details	
Feeding system	Not specified
Holding system	predominantly pasture

**Activity History**

Current step identification 3  
 Next step identification 4  
 Activity Type: Fattening  
 Activity Step 2  
 Country of activity Germany  
 Performer Type Fattener  
 Performer Identification: Name: Fettmann KG  
 Street: Kanalstraße 33  
 City: Köln  
 Postal code: 50825  
 Country: Germany  
 Date of arrival 02.06.2004  
 Date of departure 02.09.2004  
 Reason for movement sale for slaughtering

Meat Despatch Information	
Fattening Details	
Country of fattening	Germany
Feeding system	Intensive
Holding system	predominantly pasture

**Activity History**

Current step identification 4  
 Next step identification 5  
 Activity Type: Slaughtering  
 Activity Step  
 Country of activity Belgium  
 Performer Type Slaughterer  
 Performer Identification: GLN: 4012345000009  
 ApprovalNumber:BE234  
 Date of arrival 03.09.2004  
 Date of departure 05.09.2004  
 Reason for movement sale for cutting

Meat Despatch Information	
Slaughtering Details	
Date of slaughter	04.09.2004
Slaughter system	halal
Category (UN/ECE)	young intact male
Conformation (SEUROP)	E
Fat cover (UN/ECE)	Not specified

**Activity History**

Current step identification 5  
 Next step identification 6  
 Activity Type: Cutting  
 Activity Step 1  
 Country of activity France  
 Performer Type Cutter  
 Performer Identification: GLN: 4000005000070  
 Approval Number: FR2345  
 Date of arrival 05.09.2004  
 Date of departure 07.09.2004

Meat Despatch Information	
Cutting Details	
UN/ECE classification	1164353010400015000

**ActivityHistory**

Current step identification 6  
 Next step identification



Activity Type: Cutting  
 Activity Step 2  
 Performer Type Cutter  
 Performer Identification: GLN: 4400999000016  
 Approval Number: DK98767  
 Date of arrival 08.09.2004  
 Date of departure 10.09.2004

**Meat Despatch Information**  
**Cutting Details**  
 UN/ECE classification 1164353010400017999

GTIN	Additional ID	
44009990004433	DK9999	Meat history information (origin and processing history)
.....		

**Process step 6: Mincer**

A shipment of 2 products of secondary cuts from cutting plant 2 is received by the mincer identified with GLN 4055555999992 on September 12th, 2004.

Product C identified with GTIN 44009990009933 and batch number DK3296 is converted into minced beef identified with GTIN 4055555000568 and batch number NL1232.

GTIN	40555550005688
Batch number	NL1232
Date of arrival	12.09.2004
Fat content	40 %
Country of cutting	Netherlands
Date of departure	13.09.2004

The message sent from the mincer to the retailer contains the following information (related to the product respectively GTIN):

TradeItem Identification	ItemSub Identification	
GTIN	Additional ID	
40555550005688	NL1232	Meat history information (origin and processing history)

**Activity History**

Current step identification 1  
 Next step identification 2  
 Activity Type: Breeding  
 Activity Step  
 Country of activity Belgium  
 Performer Type Breeder  
 Performer Identification: Name: Producer company  
 Street: Backstreet 133  
 City: Brussels  
 Postal code: 12345  
 Country: Belgium  
 Date of arrival  
 Date of departure 01.03.2004  
 Reason for movement sale for fattening

**Meat Despatch Information**  
**breedingDetails**  
 Date of birth 01.01.2004  
 Gender male  
 Breed Jersey  
 Feeding system organic  
 Holding system predominantly barn  
 Breed of father Jersey  
 Breed of mother Jersey



Activity History	
Current step identification	2
Next step identification	3
Activity Type:	Fattening
Activity Step	1
Country of activity	Netherlands
Performer Type	Fattener
Performer Identification:	Name: Fattening company Street: Bigstreet 5 City: Amsterdam Postal code: 34567 Country: Netherlands
Date of arrival	02.03.2004
Date of departure	01.06.2004
Reason for movement	sale for fattening
<b>Meat Despatch Information</b>	
<b>Fattening Details</b>	
Feeding system	Not specified
Holding system	predominantly pasture

Activity History	
Current step identification	3
Next step identification	4
Activity Type:	Fattening
Activity Step	2
Country of activity	Germany
Performer Type	Fattener
Performer Identification:	Name: Fettmann KG Street: Kanalstraße 33 City: Köln Postal code: 50825 Country: Germany
Date of arrival	02.06.2004
Date of departure	02.09.2004
Reason for movement	sale for slaughtering
<b>Meat Despatch Information</b>	
<b>Fattening Details</b>	
Country of fattening	Germany
Feeding system	Intensive
Holding system	predominantly pasture

Activity History	
Current step identification	4
Next step identification	5
Activity Type:	Slaughtering
Activity Step	
Country of activity	Belgium
Performer Type	Slaughterer
Performer Identification:	GLN: 4012345000009 ApprovalNumber:BE234
Date of arrival	03.09.2004
Date of departure	05.09.2004
Reason for movement	sale for cutting
<b>Meat Despatch Information</b>	
<b>Slaughtering Details</b>	
Date of slaughter	04.09.2004
Slaughter system	halal
Category (UN/ECE)	young intact male
Conformation (SEUROP)	E
Fat cover (UN/ECE)	Not specified

Activity History	
Current step identification	5



Next step identification 6  
 Activity Type: Cutting  
 Activity Step 1  
 Country of activity France  
 Performer Type Cutter  
 Performer Identification: GLN: 400005000070  
 Approval Number: FR2345  
 Date of arrival 05.09.2004  
 Date of departure 07.09.2004

Meat Despatch Information  
 Cutting Details

UN/ECE classification 1164353010400015000

ActivityHistory

Current step identification 5  
 Next step identification 6  
 Activity Type: Cutting  
 Activity Step 2  
 Performer Type Cutter  
 Performer Identification: GLN: 4400999000016  
 Approval Number: DK98767  
 Date of arrival 08.09.2004  
 Date of departure 10.09.2004

Meat Despatch Information  
 Cutting Details

UN/ECE classification 1164353010400017999

ActivityHistory

Current step identification 7  
 Next step identification  
 Activity Type: Mincing  
 Activity Step 1  
 Country of activity Netherlands  
 Performer Type Mincer  
 Performer Identification: GLN: 4055555999992  
 Date of arrival 12.09.2004  
 Date of departure 13.09.2004

Meat Despatch Information  
 Mincing Details

Fat content 40 %

### Process step 7: Retailer

A shipment of 1 batch of consumer units from the mincer is received September 30th, 2004.

The batch is made available for sale at a retail outlet October 1st, 2004.

### Document Example (message after process step 4)

Attribute	Value
<b>MeatDespatchAdviceLineItemExtension</b>	
<b>AnimalIdentification (+animalIdentification)</b>	
animalIdentificationNumber	AU71244008
<b>MeatActivityHistory (*1)</b>	
meatProcessingActivityTypeCode	BREEDING
currentStepIdentification	1
nextStepIdentification	2
countryOfActivityCode	BE



Attribute	Value
dateOfDeparture	2004-03-01
movementReasonCode	Sale for fattening
<b>MeatProcessingParty</b>	
meatProcessingPartyTypeCode	BREEDER
<b>Address</b>	
name	Producer Company
streetAddressOne	Rue du Bac 133
city	Brussels
postalCode	12345
countryCode	BE
<b>MeatWorkItemIdentification</b>	
meatWorkItemTypeCode	ANIMAL
<b>AnimalIdentification (+animalIdentification)</b>	
animalIdentificationNumber	AU71244008
<b>MeatBreedingDetails</b>	
breedCode	Jersey
breedOfMotherCode	Jersey
breedOfFatherCode	Jersey
dateOfBirth	2004-01-01
feedingSystemCode	organic
genderCode	MALE
housingSystemCode	Predominantly barn
<b>AnimalIdentification (+paternalIdentification)</b>	
animalIdentificationNumber	AU71244111
<b>AnimalIdentification (+maternalIdentification)</b>	
animalIdentificationNumber	AU71244222
<b>MeatActivityHistory (*2)</b>	
meatProcessingActivityTypeCode	FATTENING
currentStepIdentification	2
nextStepIdentification	3
activitySubStepIdentification	1
countryOfActivityCode	NL
dateOfArrival	2004-03-02
dateOfDeparture	2004-06-01
movementReasonCode	Sale for fattening
<b>MeatProcessingParty</b>	
meatProcessingPartyTypeCode	FATTENER
<b>Address</b>	
name	Fattening Company
streetAddressOne	Damstraat 5



Attribute	Value
city	Amsterdam
postalCode	34567
countryCode	NL
<b>MeatWorkItemIdentification</b>	
meatWorkItemTypeCode	ANIMAL
<b>AnimalIdentification (+paternalIdentification)</b>	
animalIdentificationNumber	AU71244008
<b>MeatFatteningDetails</b>	
housingSystemCode	Predominantly pasture
<b>MeatActivityHistory (*3)</b>	
meatProcessingActivityTypeCode	FATTENING
currentStepIdentification	3
nextStepIdentification	4
activitySubStepIdentification	2
countryOfActivityCode	DE
dateOfArrival	2004-06-02
dateOfDeparture	2004-09-02
movementReasonCode	Sale for slaughtering
<b>MeatProcessingParty</b>	
meatProcessingPartyTypeCode	FATTENER
<b>Address</b>	
name	Fettmann KG
streetAddressOne	Kanalstraße 5
city	Köln
postalCode	50825
countryCode	DE
<b>MeatWorkItemIdentification</b>	
meatWorkItemTypeCode	ANIMAL
<b>AnimalIdentification (+animalIdentification)</b>	
animalIdentificationNumber	AU71244008
<b>MeatFatteningDetails</b>	
feedingSystemCode	Intensive
housingSystemCode	Predominantly pasture
<b>MeatActivityHistory (*4)</b>	
meatProcessingActivityTypeCode	SLAUGHTERING
currentStepIdentification	4
countryOfActivityCode	BE
dateOfArrival	2004-09-03
dateOfDeparture	2004-09-05
movementReasonCode	Sale for cutting

Attribute	Value
<b>MeatProcessingParty</b>	
meatProcessingPartyTypeCode	SLAUGHTERER
gln	4012345000009
approvalNumber	BE234
<b>MeatWorkItemIdentification</b>	
meatWorkItemTypeCode	CARCASS
<b>AnimalIdentification (+animalIdentification)</b>	
animalIdentificationNumber	AU71244008
<b>TradeItemIdentification (+productIdentification)</b>	
gtin	40123450000166
<b>MeatSlaughteringDetails</b>	
meatConformationCode	SE
dateOfSlaughtering	2004-09-04
meatCategoryCode	Young intact male
slaughteringSystemCode	halal
slaughteringWeight	280,3 KGM

## 6 Implementation Considerations

### 6.1 User Guide

The Functional User Guide contains more information about the structure and content of the message: [http://www.gs1.org/docs/ecom/xml/3/3.4/eCom-Trade\\_messages.html#DespatchAdviceLineItemExtensionEbmeat](http://www.gs1.org/docs/ecom/xml/3/3.4/eCom-Trade_messages.html#DespatchAdviceLineItemExtensionEbmeat)

### 6.2 Message Specific Considerations

Not Applicable

## 7 Summary of Changes

Any change in the GS1 standards is done based on the Work Request (WR) submitted by the GS1 User Companies or Member Organisations. All Work Requests are documented in the Work Request system available on the GS1 website: <http://wr.gs1.org>. The system is accessible to registered users. New visitors need to register first, to be able to access it. WRs can be searched by the number referenced in tables below, see: Search Work Requests. The number starts with the two last digits of the year when it was submitted, followed by the consecutive number within that year.

 **Note:** WRs submitted earlier than February 2012 should be searched in Old Change Requests.

### 7.1 BMS Release 3.0

Change	Associated CR Number
Reworked for Major release 3.0, updated the model, GDD reports and examples to reflect the changes in modeming methodology.	N/A
Added definition for optimumMaturationDate	N/A
Added the following data types and code lists (formerly part of eCom Common): <ul style="list-style-type: none"> <li>■ AnimalIdentificationTypeCode</li> <li>■ MeatProcessingActivityTypeCode</li> <li>■ MeatProcessingPartyIdentificationTypeCode</li> <li>■ MeatProcessingPartyTypeCode</li> <li>■ MeatWorkItemTypeCode</li> </ul>	N/A
<b>Updated for BMS Publication:</b> <ul style="list-style-type: none"> <li>■ Changed status from Draft to Approved</li> <li>■ Removed copyright year in footer of document</li> <li>■ Clean-up of Document Change History</li> <li>■ Fixed missing definition in GDD report for attribute optimumMaturationDate in class MeatSlaughteringDetails to "Date at which optimal maturity occurs. " (definition from Release 2.2, def for 3.0 still missing in GDD)</li> <li>■ Updated architectural principles section to correct fields.</li> </ul>	N/A

### 7.2 BMS Release 3.1

No work requests. Indirect changes due to upgrade to new Shared and eCom Common libraries.





### 7.3 BMS Release 3.2

Change	Associated WR
<p><b>class ebMeat - MeatDespatchAdviceLineItemExtension - maintenance view</b></p> <div style="border: 1px solid black; padding: 5px; margin: 5px 0;"> <p style="text-align: center;">« » <b>MeatActivityHistory</b></p> <ul style="list-style-type: none"> <li>+ meatProcessingActivityTypeCode: MeatProcessingActivityTypeCode</li> <li>+ currentStepIdentification: positiveInteger [0..1]</li> <li>+ nextStepIdentification: positiveInteger [0..1]</li> <li>+ activitySubStepIdentification: positiveInteger [0..1]</li> <li>+ countryOfActivityCode: CountryCode [0..1]</li> <li>+ dateOfArrival: date [0..1]</li> <li>+ dateOfDeparture: date [0..1]</li> <li>+ movementReasonCode: Code [0..1]</li> <li>+ «association» avpList: Ecom_AttributeValuePairList [0..1]</li> </ul> <hr/> <p style="text-align: center;"><i>maintenance</i></p> <p>Change: (Verified) 3.2 added +avpList (WR 14-110)</p> </div>	<p><b>14-000110</b></p> <p>Add Attribute Value Pair at the root, line item and sub line item levels</p>

### 7.4 BMS Release 3.3

Change	Associated WR
<p>Created Ecom_TradeItemIdentification class and changed association from the previous TradeItemIdentification</p> <div style="border: 1px solid black; padding: 5px; margin: 5px 0;"> <p><b>class MeatWorkItemIdentification - maintenance view</b></p> <div style="border: 1px solid black; padding: 5px; margin: 5px 0;"> <p style="text-align: center;">« » <b>MeatWorkItemIdentification</b></p> <ul style="list-style-type: none"> <li>+ meatWorkItemTypeCode :MeatWorkItemTypeCode [0..1]</li> <li>+ batchNumber :string [0..1]</li> <li>+ livestockMobIdentifier :string [0..1]</li> </ul> <hr/> <p style="text-align: center;"><i>maintenance</i></p> <p>Change: (New) 3.3 changed association from TradeItemIdentification to Ecom_TradeItemIdentification (WR 15-314)</p> </div> <div style="margin-left: 20px;"> <p>+productIdentification</p> <p style="text-align: right;">0..1</p> </div> <div style="border: 1px solid black; padding: 5px; margin-left: 20px; width: fit-content;"> <p style="text-align: center;">eCom GS1 Identification:: <b>Ecom_TradeItemIdentification</b></p> <hr/> <p style="text-align: center;"><i>maintenance</i></p> <p style="text-align: center;">Change: (New) 3.3 New class (WR 15-314)</p> </div> </div>	

### 7.5 BMS Release 3.4

No work requests. Indirect changes due to upgrade to new Shared and eCom Common libraries.

## 7.6 BMS Release 3.4.1

No work requests. Indirect changes due to upgrade to new Shared and eCom Common libraries.

## 8 Appendices

Not Applicable

## 9 Acknowledgements

### 9.1.1 Work Group

Function	Name	Company / organisation
Co-chair	Rossner (Pottier), Natascha	GS1 France
Co-chair	Schmidt, Tom Eric	August Storck KG
Member	Bemrose, Jonathan	R&R Ice Cream
Member	Bodemer, Petra	dm-drogerie markt GmbH + Co. KG
Member	Boikanyo, Rebone	GS1 South Africa / Consumer Goods Council of South Africa
Member	Canada, ON	M3B 3L1
Member	Carlson, Jim	General Mills, Inc.
Member	Chresta, Richard	GS1 Switzerland
Member	Cook, Don	Wal-Mart Stores, Inc.
Member	Cox, Marc	Philips Electronics N.V.
Member	Darnell, David	Systrends
Member	De Flou, Nele	GS1 Belgium & Luxembourg
Member	Dicks, Arne	GS1 Germany
Member	Duvinger, Karina	GS1 Sweden
Member	Foerderer, Klaus	GS1 Germany
Member	Gathmann, Stefan	GS1 Ireland
Member	Grangard, Anders	GS1 Global Office
Member	Harpell, Eileen	GS1 Community Room Staff
Member	Hand, Phil	JDA Software
Member	Herregodts, Kurt	GS1 Belgium & Luxembourg
Member	Kempkes, Fred	Unilever N.V.
Member	Kernan, Brendan	GS1 Ireland
Member	Kidd, Robin	Nestle
Member	Krid, Anne-Claire	GS1 France
Member	Lanoue, Tom	General Mills, Inc.
Member	Laur, Rita	GS1 Canada
Member	Lenman, Mia	GS1 Sweden
Member	Lerch, Hanjoerg	METRO Group
Member	Moberg, Dale	Axway



Function	Name	Company / organisation
Member	Montes de Oca, Alejandra	GS1 Mexico
Member	Ng, Ella	GS1 Australia
Member	Peelen, Esther	GS1 Netherlands
Member	Pelekies, Andreas	GS1 Germany
Member	Perrier, Patricia	GS1 France
Member	Przybilla, Christian	GS1 Germany
Member	Pujol, Xavier	GS1 Spain
Member	Racek, Greg	Wal-Mart Stores, Inc.
Member	Repetto, Mirko	GS1 Italy
Member	Robba, Steven	1WorldSync Holdings, Inc.
Member	Rosell, Pere	GS1 Spain
Member	Rosenberg, Steven	GS1 US
Member	Schmid, Sue	GS1 Australia
Member	Schneider, Christian	GS1 Switzerland
Member	Sehorz, Eugen	GS1 Austria
Member	Sharma, Vishal	General Mills, Inc.
Member	Shimazaki, Ayako	GS1 Japan
Member	Sion, Emilie	GS1 France
Member	Souza, Nadia	GS1 Brasil
Member	Strand, Roman	GS1 Germany
Member	Tan, Milton	GS1 Malaysia
Member	Tompsett, Simon	Waitrose
Member	Trelle, Ute	1WorldSync Holdings, Inc.
Member	Tse, Steve	GS1 Hong Kong
Member	Tyson, Betty	Knouse Foods Cooperative, Inc
Member	Van den Bergh, Senne	GS1 Belgium & Luxembourg
Member	Van der Eijk, Pim	OASIS - Sonnenglanz Consulting BV
Member	Veldhuis, Saskia	Procter & Gamble Co.
Member	Welch, Shan	GS1 UK
Member	Westerkamp, Jan	GS1 Netherlands
Member	Wilson, Mary	GS1 US
Member	Windsperger, Bekki	Best Buy Co., Inc.
Member	Yang, Shaopeng	GS1 China
Member	Yusdiar, Dani	GS1 Indonesia
Member	Zwanziger, Greg	SUPERVALU

### 9.1.2 Development Team Members

Function	Name	Organisation
GSMP Process Lead	Jean-Luc Champion and Tasha Wiehe	GS1 Global Office



Function	Name	Organisation
Technical Development Lead	Ewa Iwicka	GS1 Global Office
Peer Review	Mark Van Eeghem	GS1 Global Office